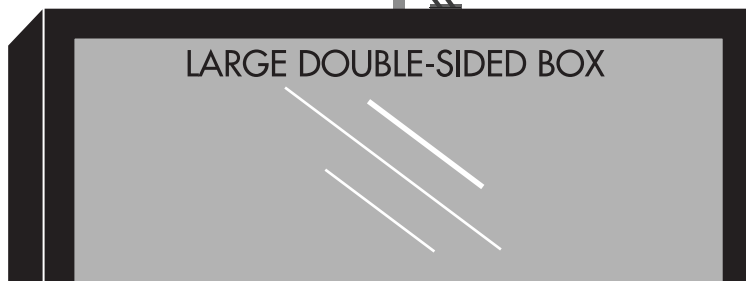


STEP 1



STEP 1

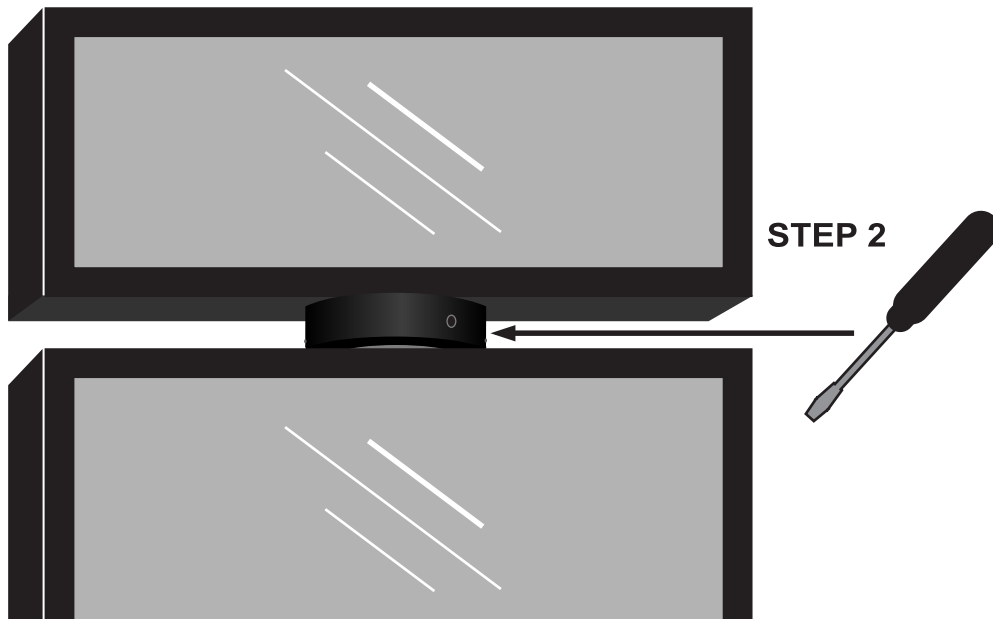
Using both hands, lower the rotating top down onto the peg that is on the top of the large double-sided box. The peg should insert into the center of the rotator base.

STEP 2

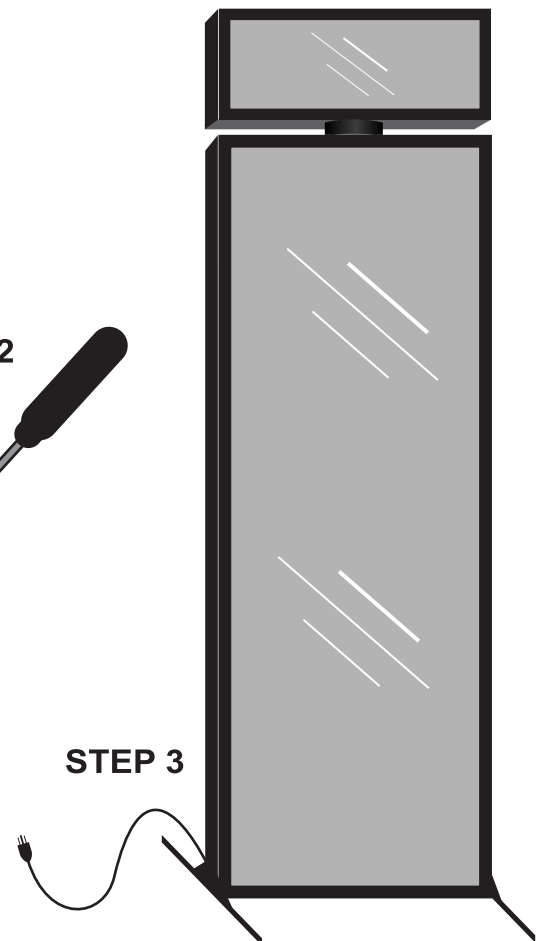
Manually turn rotating top so that the screw hole is clear of the electrical contacts. Using a standard screwdriver, tighten set-screw through the screw hole.

STEP 3

Once the display is fully assembled and any tools are free from the display, you are now ready to plug in and turn on your new Double-Sided Rotating Light-Up™ Display.



STEP 2



STEP 3